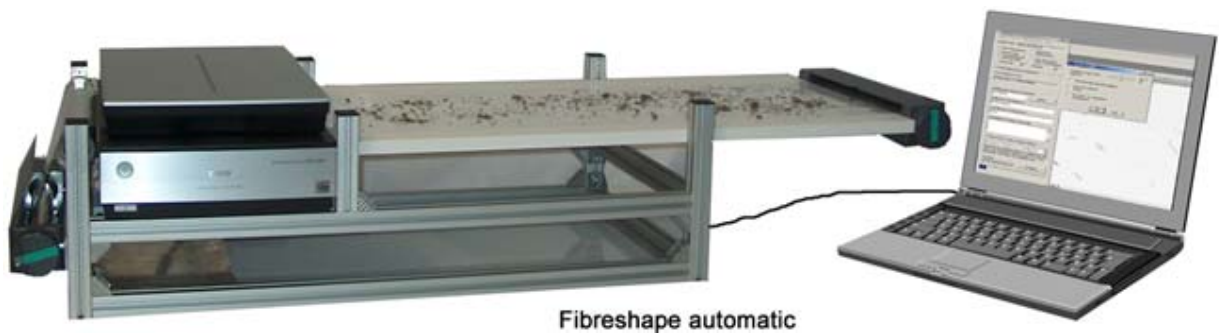


IST Fibreshape system

Fibreshape is a quality control and characterisation system for fibre applications. It is unique in its set of features, simple user interface, and rapid characterisation process, from the sample preparation to the printed certificate. The measurement range is from 2 μm to 30 cm fibre length.

Two kinds of Fibreshape systems exist:

- Fibreshape - where the samples are distributed stepwise by hand on the scanner
- Fibreshape automatic - where the samples are feeded automatically by the sample feeder on the scanner. (sample feeder: patent pending).



The very simple handling of "Fibreshape automatic":

1. Simply distribute your fibre samples on the board
2. Enter a description and select fibre length, fibre thickness or other reports with a single click!
3. All the specimen are scanned and characerized automatically.
Obtain the final reports or insert results into quality chart database.

Your advantages:

- A very quick measurement method
- Easy and fast specimen/sample preparation
- Minimisation of possible operator errors
- Consistent and reproducible results
- Very attractive price/performance relation
- Reliable and rapid industrial method for quality inspection

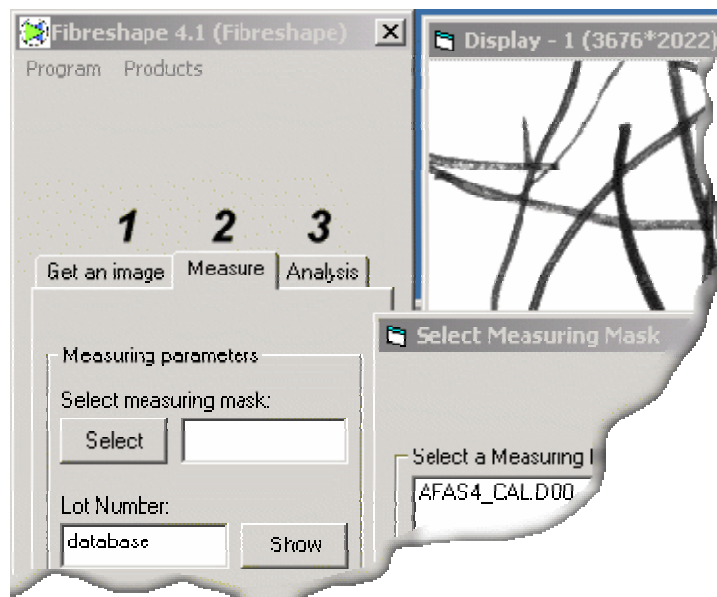
Reoterm Instrumentos Científicos Ltda.

Key features

- Quick measurement of fibre size *and* shape distribution
- Length measurement of short fibres (flock, linters and other fibres with a length/thickness ratio < 200)
- Fibre orientation measurement
- Characterisation of optical properties: colour and transparency
- Measurement of trash/dust content (consider **mixtures** for more details)
- Processing and storage of test data (for further external use and analysis)
- Integration for SAP or similar systems available
- Reliable and rapid industrial method for quality inspection

Fibres of a fineness range from 5 μm up to 5000 μm (5 mm) can be measured.

Simple user interface



To facilitate the fibre characterisation, the user interface exposes only 3 steps:

1. Image acquisition
2. Fibre recognition and measurement
3. Analysis by means of statistical evaluation

Reoterm Instrumentos Científicos Ltda.

Fibreshape applications

- Wool
- Cotton
- Chipboard and paper industry (wood shred)
- Non-wovens (industrial fibres)
- Fibre composite industry (carbon fibres)

Technical data

The Fibreshape System consists of:

- The Fibreshape software
- State-of-the-art image analysis computer running Microsoft Windows NT/2000/XP
- A slide and/or flatbed scanner certified for Fibreshape
- Standard office suite

For further information please consult: www.istag.ch

IST- Innovative Sintering Technologies Ltd

The logo background features a dark blue rectangular area with a light blue, textured background. Several dark, circular shapes, resembling sintered particles or fibers, are scattered across the right side of the rectangle.

Reoterm Instrumentos Científicos Ltda.

Rio: Rua Pereira de Almeida, 31 parte. Praça da Bandeira. CEP: 20.260-100. Rio de Janeiro – RJ – Brasil Tels: 21 25022978 – 25020108 – 22733667. Fax: 21 25040868.
São Paulo: Rodovia Regis Bittencourt, 3.360. Km. 272. CEP: 06793-000. Taboão da Serra – SP – Brasil. Tels: 11 47862177 – 47716954. Fax: 11 47878319.
E-mail: info@reoterm.com.br Sites: www.reoterm.com.br e www.expolabor.com.br

Reoterm e Precilabo são EMPRESAS DO GRUPO PRECITECH