

# Gas Hydrate Autoclave GHA200

WWW.PSL-SYSTEMTECHNIK.DE



The autoclave GHA200 provided by PSL Systemtechnik is the renewed and actualized version of the standard apparatus for examining gas hydrate formation processes. The equipment makes research on the effectiveness of kinetic as well as thermodynamic gas hydrate inhibitors comfortable and reliable.

The equipment comprises the stainless steel autoclave body and head, built-in double jacket for temperature control, built-in magnetic stirrer, temperature and pressure transducers and a sapphire window. This allows the user to look inside the autoclave by using a borescope with an attached high resolution digital camera.

The control and data visualisation software Hydrate 2.0 controls up to 6 hydrate cells including stirrers and chiller baths at the same time. The integrated frame grabber allows taking photos or videos manually or automatically. An auto-restart option ensures safe long-term measurements even after power failures.

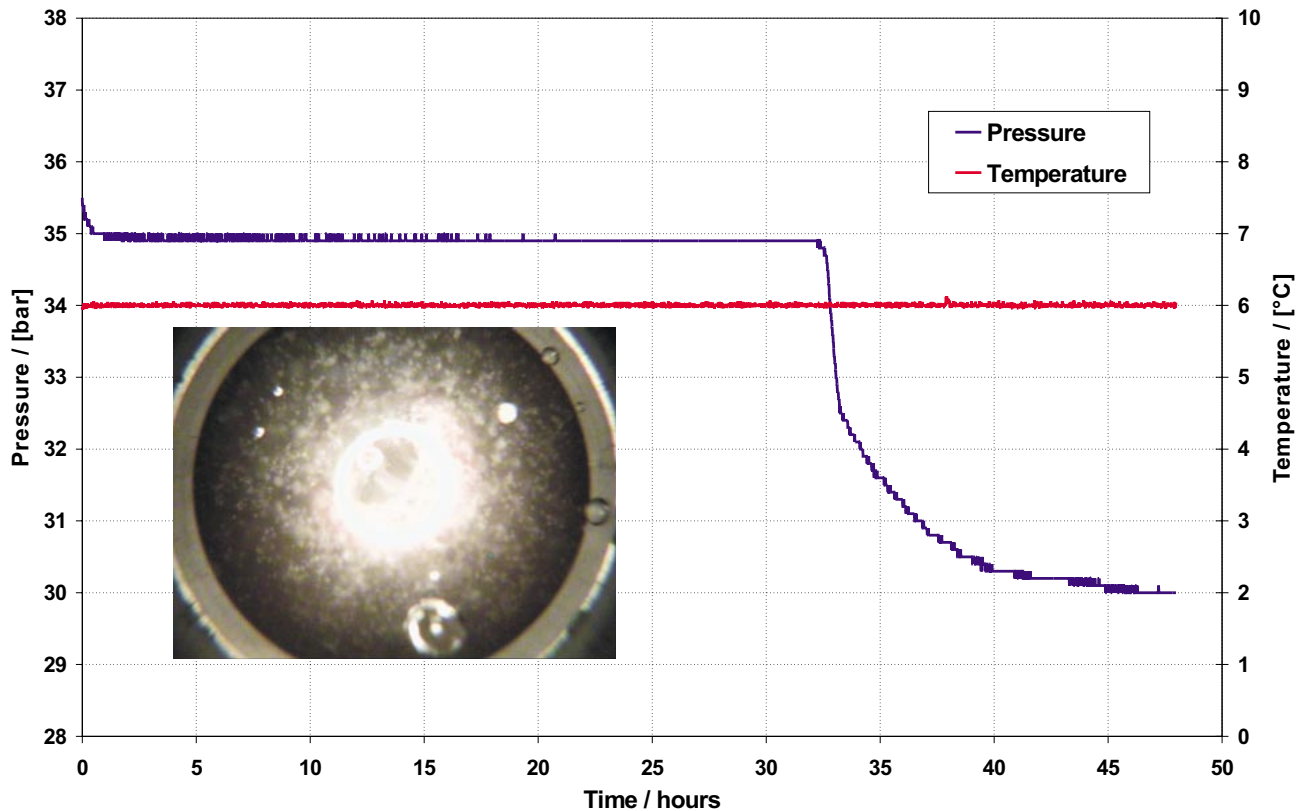
Furthermore, the GHA200 is highly ergonomic and requires small space on your lab desk. The specially designed locking mechanism (to be opened by just one person) and the integrated quick connectors make operation easy and comfortable.

## Application:

- Examination of hydrate inhibitors
- Optimisation of inhibitor concentration
- Quality control

## Characteristics:

- High resolution digital endoscope camera
- Easy-to-use opening mechanism



### Technical data:

Temperature range:	-10°C to +60°C (other temperature ranges available)
Temperature measuring:	Pt100 (4 wire) external, accuracy 0.1 K
Pressure range:	200 bar (2,900 psi), 700 bar (10,000 psi) on request
Pressure measuring:	DMS membrane, accuracy 0.5%
Volume:	450 ml total size; 200ml fluid volume (recommended)
Power consumption:	210...240 V, 50/60 Hz, 2200 W, (120 V on request)
Stirrer speed:	100...1000 rpm, on/off
Optics:	Wide angle borescope, halogene/diode lamp, fibre optic cable
Camera resolution:	440.000 pixel, RGB / YC
Control:	PC, 15" TFT display, Win2000 with software Hydrate 2.0 for fully automated measurement control, up to 6 pressure cells, measurement scheduler, automated photo handling, automated video handling, auto restart
Dimension (WxHxD):	approx. 120 cm x 35 cm x 80 cm
Weight:	approx. 40 kg (without computer)